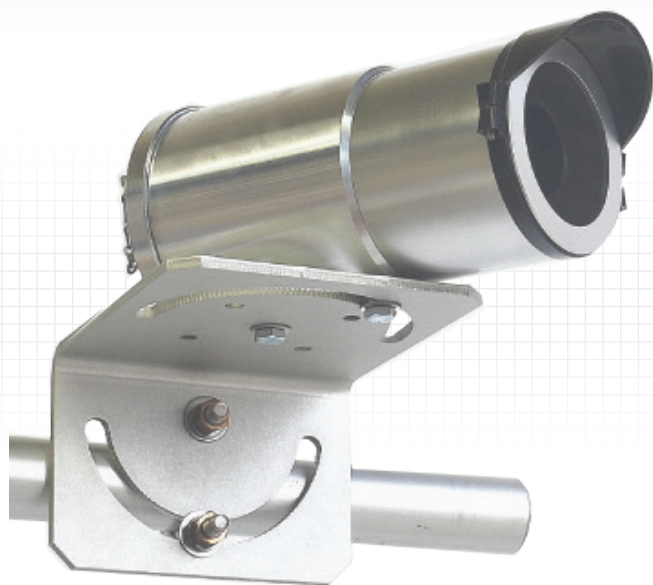




CC5MPX and CC5MPXWD

High Resolution Digital Network Cameras



Rugged, High-Resolution

Weatherproof enclosure for use in harsh, remote locations

Overview

The CC5MPX and CC5MPXWD are high-resolution digital cameras with video capabilities. They produce JPG images with a resolution of up to 5 megapixels, and shoot videos with a resolution of up to 720P. Power conserving modes allow the cameras to be used in remote battery-powered installations.

Designed to work in harsh environments, the cameras can operate at temperatures as low as -40°C and as high as 60°C . They have an integrated environmentally sealed enclosure that protects them from moisture and high-humidity. Additionally, the CC5MPXWD includes a window defroster that prevents and removes light frost and icing* from the camera's window.

Benefits and Features

- › Low power consumption
- › Can be controlled by internal timer or by external controls: motion detector, web page, datalogger
- › Designed to work in harsh environments, this camera operates at temperatures as low as -40°C and as high as 60°C

Technical Details

The CC5MPX and CC5MPXWD have several options for image acquisition and storage. Still images or videos can be taken based on an internal timer, motion detection, or a trigger from a

PakBus device (datalogger or MD485). The images or videos can then be stored on an SD card, saved in a datalogger's memory, sent to a PC via email, or transmitted to an FTP server.

**With extreme icing or riming conditions and low temperatures, the CC5MPXWD's window defroster may not be able to clear the window due to the power constraints of the defroster.*

questions & quotes: 435.227.9080

www.campbellsci.com/digital-camera



Ordering Information

Digital Cameras

CC5MPX	CSC High Resolution Digital Network Camera (-40° to +60°C)
CC5MPXWD	CSC High Resolution Digital Network Camera with window defroster (-40° to +60°C)

Memory Option (choose one)

-NC	No SD Memory Card
-4G	4 GB SD Memory Card
-8G	8 GB SD Memory Card

Accessories

18549	CC5MPX Mounting Kit for mounting to a crossarm.
CC5MPXCBL1-L	CC5MPX Power and I/O Cable (required). Enter cable length, in feet, after the -L. Maximum length is 100 ft.
CC5MPXCBL2-L	CC5MPX RJ45 Environmental Cable. Connects camera to PC. Enter length, in feet, after the -L. Maximum length is 225 ft.
28900	10Base-T CAT5 Ethernet Cable with 10 ft length. Connects camera to PC. Use for indoor applications only.
28033	Ethernet Surge Protector helps protect device from electrical surges. An Ethernet cable is required to connect the 28033 to the camera. Another Ethernet cable such as the 28898 or 28899 is used to connect the 28033 to the computer or hub.
28898	CAT5e, unshielded straight through cable (6 in). This cable is often used with the 28033 Surge Protector
28899	CAT5e, unshielded straight through cable (2 ft). This cable is often used with the 28033 Surge Protector



Above is a photograph taken by the CC5MPX camera. Campbell Scientific Canada installed the camera high above Edmonton's spectacular river valley on the University of Alberta's H.M. Tory Building. The camera records visual weather conditions every 15 minutes and transfers the image via FTP to a local server.

Specifications

- › Diameter: 9.3 cm (3.7 in.)
- › Length: 22 cm (8.7 in)
- › Weight: 1.06 kg (2.34 lb)
- › Operating Temperature: -40° to +60°C
- › Clock Accuracy: ±2 min./year (-40° to +60°C)
- › Image or Video Capture Triggers: Two independent self timers; external trigger; motion detection; web page control
- › Programmable Still Image Resolutions (JPEG): 2592 x 1944; 1280 x 960; 1280 x 720; 640 x 480; 640 x 352; 320 x 240; 320 x 176
- › Video: Capable of up to 720P for 1280 x 720 (MPEG4), 640 x 480 (MJPEG), 320 x 240 (MPEG4)
- › Communication Interfaces: RS-232 port; RS-485 port; Ethernet 10/100
- › Communications Protocols: PakBus; FTP; email; Web page interface via web browser

Lens**

- › Mount: C-type
- › IRIS: DC compatible
- › Size: 4 to 12 mm
- › Field Of View: 27° to 80°

Operating Power

- › CC5MPX: 9 to 30 Vdc
- › CC5MPXWD: 9 to 16 Vdc

Current Drain

- › Operating (camera only): 250 mA (maximum at 12 Vdc)
- › Quiescent: ≤1 mA (off power mode)
- › C5MPXWD defroster on: 1.2 A (maximum at 16 Vdc); 1 A (typical at 12 Vdc)

Memory Card Interface

- › Type: Secure Digital (SD)
- › File System: FAT32
- › File Type: JPEG (image), AVI (video)
- › Size: 16 GB or less

Image Capture Time (from wakeup to start of capture)

- › Fully On: < 1 s (5 MP images take longer)
- › Partially On: 10 s
- › Deep Sleep: 15 s
- › Off State: 90 s

****A manual zoom lens can be special ordered for both the CC5MPX and the CC5MPXWD. Additionally, a FishEye lens for capturing hemispherical images or videos can be special ordered for the CC5MPX. Contact Campbell Scientific for more information about these non-standard lenses.**